

Back to School Message from Dr. Brabrand



Dr. Scott Brabrand
Superintendent



Welcome from the School Board

Karen Corbett Sanders

Mount Vernon District Representative



Welcome from the School Board

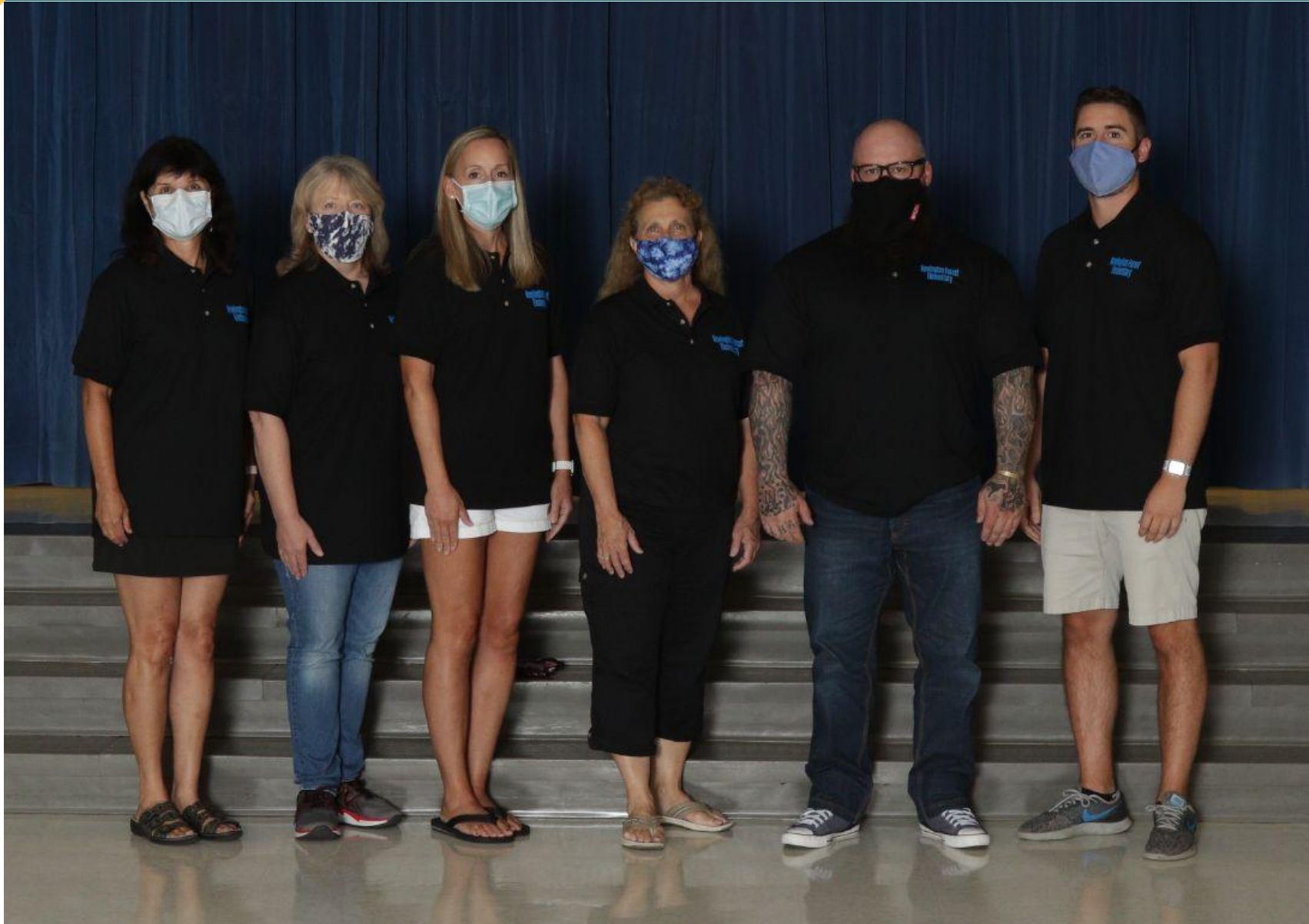
Laura Jane Cohen

Springfield District Representative





Newington Forest Elementary School
SPECIALISTS





Mrs. d'Andrea Hinkle, Band Teacher

Why do I teach band?

To instill appreciation for music & to teach
The craft of learning a musical instrument &
The joy of being in a music group to
support each other & have fun doing it

Pictured with me are my strongest supporters &
Influences, Christian Hinkle, my husband &
Trumpeter (retired) in The US Army Band &
College band director, Dr. John Locke.

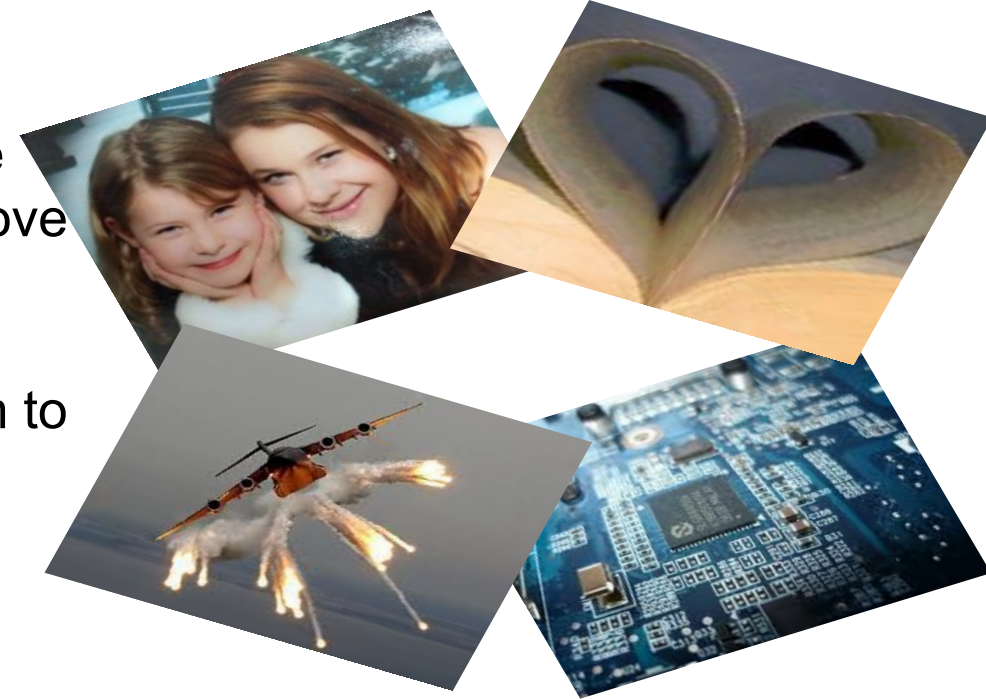
Mrs. Sharrett

Librarian

BSEE, MSA, MMOAS, and MLIS



- My parents fostered a love of lifelong learning which enabled me to serve in amazing ways including as a pilot in the Air Force.
- I have two daughters that are twice exceptional. They were both reluctant readers in elementary school and they now love reading.
- I hope to help students discover books that will inspire them to read and find a passion for life and lifelong learning.



MRS. CLARK STEAM

SCIENCE, TECHNOLOGY,
ENGINEERING, ART, AND MATH

This is my 5th year teaching STEAM at Newington Forest Elementary. In my free time I love to travel with my family, explore the world's oceans, and spend time in nature.

Why?

- I love Science!
- I want to empower students to explore real world problems through the integrated subjects of STEAM.
- STEAM encourages creativity, curiosity, critical thinking, and collaboration.





Mrs. Denise Corcoran Art Teacher BFA, MAT in Art Ed

- I have been an artist all my life.
- I want to teach children to see with an artist's eye and appreciate the beauty that surrounds us.
- I want to share the exciting adventure of learning through tactile and creative experiences.
- I want my students to be comfortable with their creative ideas and confident about their differences.
- I want to instill in them a passion for lifelong learning.

Mr. Christopher Drummond

Physical Education

- I teach elementary physical education because I love to see students develop skills over the course of their elementary experience.
- I love to watch my students grow from small children into young adults.
- I love to watch students learn to work together to solve problems that they can take into the real world.
- I teach hoping that some day my students will look back and think that I've had a positive impact in their growth into a productive member of society.





Ms. Shawn

- I have been making music in some way, shape, or form my whole life!
- I hope to help students explore how they interact with music in their lives and what it means to them.
- Recognizing music as a tool for self expression allows us to channel energy into a positive creative space.
- I love seeing students' creativity as they explore how to make their own music.
- Participating in music builds positive connections and grows a sense of community.



Ms. Sandra Ragusa, Strings Teacher

Why do I teach strings?

- To allow students to explore their creativity,
- Appreciate the beauty of music,
- Experience the power and excitement of playing in a musical ensemble,
- Learn how to help those around me sound great,
- Acknowledge the agency given to students in an ensemble,
- Inspired by women who lead orchestras around the world.

Mrs. Betz

School Based Technology Specialist (SBTS)



- ❖ This is my 19th year as a SBTS
- ❖ I enjoy seeing students and teachers have an “Ah-Ha” moment when learning new tech skills
- ❖ I attended FCPS schools (Keene Mill ES, Irving MS, and West Springfield HS)
- ❖ B.S., Virginia State University and M.Ed, George Mason University
- ❖ Wife and Mother of 2 sons
- ❖ Love spending time with my family, going to church, DIY projects, online shopping and traveling
- ❖ Supportive Sports Mom



School Counseling

Mrs. Holsinger

Laura Holsinger

*School Counselor
Grades K, 1, 2, 3, 4*

ldholsinger@fcps.edu

703.923-2683

M-F



Ms. Flora



Mr. Scott

Randy Scott

*School Counselor
Grades 5th, 6th*

rescott@fcps.edu

703.704.7185

W. F., alternate M

GMU Counseling
Intern

School Counseling at Newington Forest

- ★ Individual Counseling
 - Short term, solution focused
- ★ Group Counseling
 - Various topics, including: social skills, coping skills, changing families, grief, deployment, etc.
- ★ Classroom Lessons - Once per month on various topics:
 - Ex. Friendship, Empathy, Bullying/Harassment, Coping Skills, Mindfulness
- ★ Consult with parents and teachers to help support students

WELCOME
we're glad you're here



Back to School Night

Newington Forest ES



Back to School Night Purpose

- Foster a school-family partnership for the 2021-22 school year
- Connect with your child's teacher
- Overview of the curriculum, daily schedule, assessments, grading, learning expectations in a virtual environment
- School routines & procedures, family resources and supports to help your child be successful

Community Meeting - Health Procedures

When: Wednesday, September 15, 2021 6-7 PM

How: Virtual (link sent Wednesday morning)

What: Current COVID reporting and contact tracing procedures
Limitations we face as we manage COVID

PTA



1st Virtual PTA Meeting

Tuesday, October 12th 7:00 PM

Join the PTA!



<https://newingtonforestpta.memberhub.com/>

Welcome to our Instructional Coach

Erin Spera



Mission

To build adult learners' capacity to advance the achievement of all students and to close achievement gap through improving teaching and learning by providing job-embedded professional learning and instruction support in the content areas.

"Part teacher, part leader, part change agent, and part facilitator instructional coaches work directly with teachers in their schools and classrooms to assist with the application of new knowledge and skills necessary to improve the academic performance of all students."

- Joellen Killion and Cindy Harrison;

Taking the Lead

What do we want our students to know, understand and be able to do?

VDOE Standards of Learning

- Reading, Writing & Oral Speaking
- Mathematics
- Science
- Social Studies
- Health (*Integrated within Physical Education for 20-21 SY*)



2020-21 Essential Standards

- Streamlined the content for what is most essential for all students to show mastery of by the end of the school year.
- Include standards from the spring closure for reteaching and intervening in order to close learning gaps.

Supporting Students with Social & Emotional Learning

Social Emotional Learning (SEL) is the process through which children and adults:

- Understand and manage emotions
- Establish and maintain positive relationships
- Set and achieve positive goals
- Make responsible decisions
- Feel and show empathy

There will be an increased focus on Social Emotional Learning in collaboration with The Collaborative for Academic, Social, and Emotional Learning (CASEL).

SOCIAL EMOTIONAL



Schoology (/skoo-luh-jee/)



- ★ New learning management system in FCPS.
- ★ A learning space that enhances communication, collaboration, and personalized learning for students, teachers, and families.
- ★ Schoology supports in-person and virtual learning.

A Schoology Parent Account gives you access to:

- Your child's classes. (Homeroom class, Specials, Resource Teachers, etc.)
- Your child's upcoming assignments and learning resources.
- Class Information and announcements.

Your child's teacher will be sharing how this tool is being used in the classroom during their presentation.

Grading and Assessments

Elementary Progress Report Marks

| | |
|----------|--|
| 4 | Consistently demonstrates concepts and skills of standard taught this quarter <ul style="list-style-type: none">• Frequency of behavior, nearly all the time• Requires no support when demonstrating understanding• Demonstrates a thorough understanding of content taught• Makes no major errors or omissions when demonstrating concepts or processes taught |
| 3 | Usually demonstrates concepts and skills of standard taught this quarter <ul style="list-style-type: none">• Frequency of behavior, most of the time• Requires limited support when demonstrating understanding• Demonstrates a general understanding of content taught• Makes few major errors or omissions when demonstrating concepts or processes |
| 2 | Sometimes demonstrates concepts and skills of standard taught this quarter <ul style="list-style-type: none">• Frequency of behavior, some of the time• Requires moderate support in order to demonstrate understanding of concepts and skills• Demonstrates a partial understanding of content taught• Makes some errors or omissions when demonstrating concepts or processes |
| 1 | Seldom demonstrates concepts and skills of standard taught this quarter <ul style="list-style-type: none">• Frequency of behavior, seldom• Requires considerable support in order to demonstrate learning of concepts and skills• Demonstrates limited understanding of concepts, skills, and processes taught• Makes frequent major errors when demonstrating concepts or processes |

In your classroom session, your child's teacher will explain more about grading in the virtual environment.

K-2 Assessments

| Monthly Time Frame | Grade Level(s) | Assessment |
|-----------------------------|--------------------|--|
| September- November 2021 | Kindergarten | VKRP (Virginia Kindergarten Readiness Program) |
| | K-2 | DRA (Development Reading Assessment) & iReady Assessment |
| | Grade 1 Grade 2 | 1st- NNAT abilities assessment 2nd and 3rd-CogAT abilities assessment |
| January- March 2022 | All | WIDA for English Language Learners |
| April- June 2022 | K-2 | DRA & iReady Assessment |
| | Kindergarten | VKRP (Virginia Kindergarten Readiness Program) |

Grades 3-6 Assessments

| Monthly Time Frame | Assessment |
|-------------------------------------|--|
| September- November 2021 | Virginia Growth Assessment (VGA) - Reading & Math |
| | DRA (Development Reading Assessment) & iReady Assessment |
| | Fall Social Emotional Learning (SEL) Screener |
| January- March 2022 | WIDA for English Language Learners |
| | District Horizon Assessments in Reading & Math; Grade 5 Science |
| April- June 2022 | DRA & iReady Assessment |
| | SOL Assessments: Grades 3-6: Reading & Math Grade 4: Virginia Studies (waiver request submitted); Grade 5: Science |

Schoolwide Procedures, Attendance & Communication

School Communication

- Right now- **Keep In Touch (KIT)** Title: **Newington Forest ES**
- **Castle News**- Monthly Newsletter 1st or 2nd week
- **News You Choose:** Must Opt in
https://public.govdelivery.com/accounts/VAEDUFCPS/subscriber/new?qsp=VAEDUFCPS_1
- **Website**- <https://newingtonforestes.fcps.edu/>
- **Twitter**- @NFSknights
- We check school voicemail daily

In your classroom session, your child's teacher will explain the classroom communications.

Kiss and Ride

Kiss and Ride Procedures

- Parents stay in their vehicles to drop off and pick up their children
- For safety reasons, only use Kiss and Ride if your child's a car rider
- Parking along Newington Forest Avenue is not a safe practice for our students. It incorrectly models that students are allowed to walk across the bus loop and down the street among moving vehicles at a busy traffic time.
- If you need assistance determining whether your student is a car rider, walker or bus rider, please reach out to the main office at 703-923-2600.

Kiss and Ride Hours

- Student drop off begins at 8:35 am
- There's no adult supervision before 8:35 am
- Kiss and Ride pick up ends at 3:50 pm, if you arrive after that time your child will be waiting in the main office.
- Please follow the traffic pattern when entering the parking lot for the Kiss and Ride line

School-Wide Procedures and Routines

- ★ Student Hours **Monday-Friday 8:35 AM-3:35 PM**
- ★ **Late Bell at 8:50 AM**
- ★ **Attendance- Taken Daily** (use online form on school website or call to report absence)

In your classroom session, your child's teacher will explain the classroom procedures and routines.

Supporting Your Child at Home

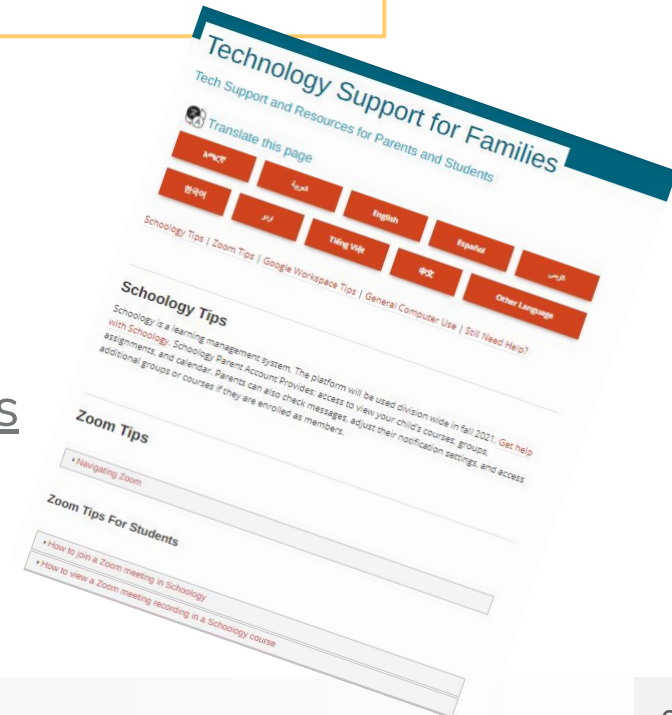
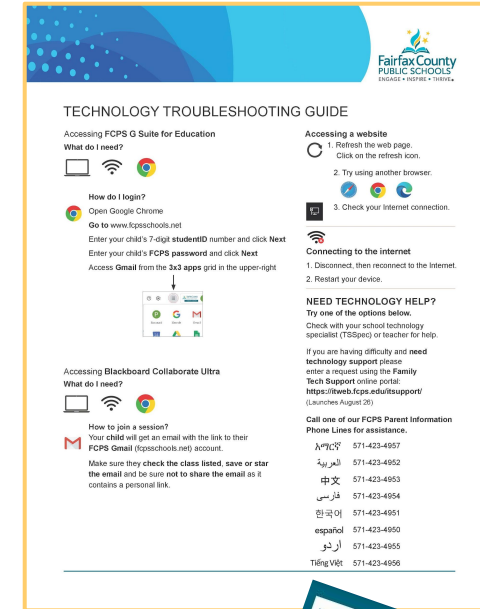
Family Resources and Supports

Communication Supports for Families

- ❖ United Language interpretation service
- ❖ Talking Points website/App
- ❖ Parent Information Phone Lines in eight languages

Technology Supports for Families

- ❖ Technology Help Desk for Families
 - 1-833-921-3277 (7am-6pm, Monday-Friday)
- ❖ Parent & Student IT Support Portal
- ❖ Technology Tips for Families
- ❖ For tech tips, go to <https://www.fcps.edu/return-school/technology-support-families>



Back to School Night Schedule

| Time | Session |
|----------------------|--|
| 6:00-6:30 pm | General Session with Miss Thompson, Principal, Mrs. Min, Assistant Principal, and our PTA Board |
| 6:30- 6:35 pm | Transition to Session #1 (Go to the Teacher's Session Link) |
| 6:35-7:15 pm | Session #1 Classroom Presentations |
| 7:15- 7:20 pm | Transition to Session #2 (Go to the Teacher's Session Link) |
| 7:20-8:00 pm | Session #2 Classroom Presentations (Repeat of session #1 for families with more than one student) |



Classroom Presentations

6:35 PM on your child's classroom link